

BOCA CIEGA EAST 16 CONDO ASSOCIATION HURRICANE PREPAREDNESS & EMERGENCY INFORMATION GUIDE 2025 *rev 7/10/25*



HANK BARTELS, PRESIDENT
LINDA BENNETT, VICE PRESIDENT
JANELLE ZEIN, TREASURER
MARIANNE BUDRONIS, SECRETARY
STEVE FREED, ASST. SECRETARY

A Special Message to Boca Sixteen East Unit Owners

Considering the recent experiences, we faced together, particularly the challenges brought about by Hurricane Helene's flooding, we have learned valuable lessons in managing the aftermath of such events.

As part of our planning efforts the Board will send out a questionnaire each year prior to the major storm season approaching to gather important information, some of which we have not gathered previously.

This new information includes an assessment of loose items in your courtyard and dock areas, your schedule away from Boca Ciega Point in the heart of storm season, an emergency contact who is responsible for your unit if you are absent, and several other important items.

This information is crucial to prepare and manage our community more effectively, and your cooperation is greatly appreciated in providing this information in a timely manner.

As of the time of publication of this document the Board is still in the process of evaluating contractors for mitigation and white box phases. Further information will be provided as we finalize this information.

ABOUT THIS HURRICANE GUIDE

The purpose of this guide is to provide information pertinent to unit owners in Boca Ciega Sixteen East before, during and after a hurricane or other tropical storm.

This is being provided in addition to the Federation's Community Emergency Operations Plan that can be found on and downloaded from the Boca Ciega website. While there is a lot of very useful and essential information contained within this document it does not represent a comprehensive step-by-step guide to be followed. This is a compilation of information from several sources, including local government websites, and is designed to help you prepare for and recover from impending storms.

The guide is broken out into 3 sections to include before, during and after the storm with helpful information, checklists and graphics in each section. In addition, there is an Emergency Kit checklist, a roles and responsibility chart for the Boca Community and Sixteen East unit owners, as well as a Boca16 Storm Prep 5-day Calendar Guideline.

A very special thanks to the Boca 16 Hurricane Committee members for their contributions to this effort.

2025 Hurricane Committee members: Board Members: Linda Bennett and Marianne Budronis. Committee Members: Tricia Galvin, Linda Hetterich, Laura Magnee, Darlene Orr, Kathy Paro and Sonny Rodriguez.

All of us play an important role in keeping not only ourselves and our own property safe and secure but also helping our neighbors and the community at large during times of disaster.

If any resident feels that additional information should be included in an updated version, please notify any board member of your suggestions.

BEFORE THE STORM – KNOW YOUR ZONE

Boca Ciega Point East Condominiums is constructed on land that is only four feet above sea level -- placing us in Evacuation Zone A.

We are subject to storm surge flooding in a Category 1 Hurricane (lowest category) and during some Tropical Storms. YES, even a tropical storm can cause storm surges and flooding. Be prepared!

Although a severe storm could occur at any time bringing with it rising waters, high gusts and even sustained winds; be mindful our Hurricane Season runs from June to November.

Should you travel during these months please secure your home, your patio, your boat, and your yard as if a storm were approaching prior to you leaving.

Once an order to evacuate is in place and the storm begins, our BCP staff will not be on duty and your neighbors will be gone.

These simple facts make it imperative to have an emergency/disaster plan in place. Your current Board members and the hurricane committee have collaborated to compile this information.

BEFORE THE STORM – PLANNING TIPS

5 THINGS TO KNOW ABOUT HAVING AN EVACUATION PLAN

1 Find out if you would need to evacuate. Don't travel hundreds of miles, only far enough away from the evacuation area.

2 Plan your evacuation route. Have an alternate route.

3 Leave when ordered to do so. Do not wait.

4 Communicate your plan with someone not in the storm's path.

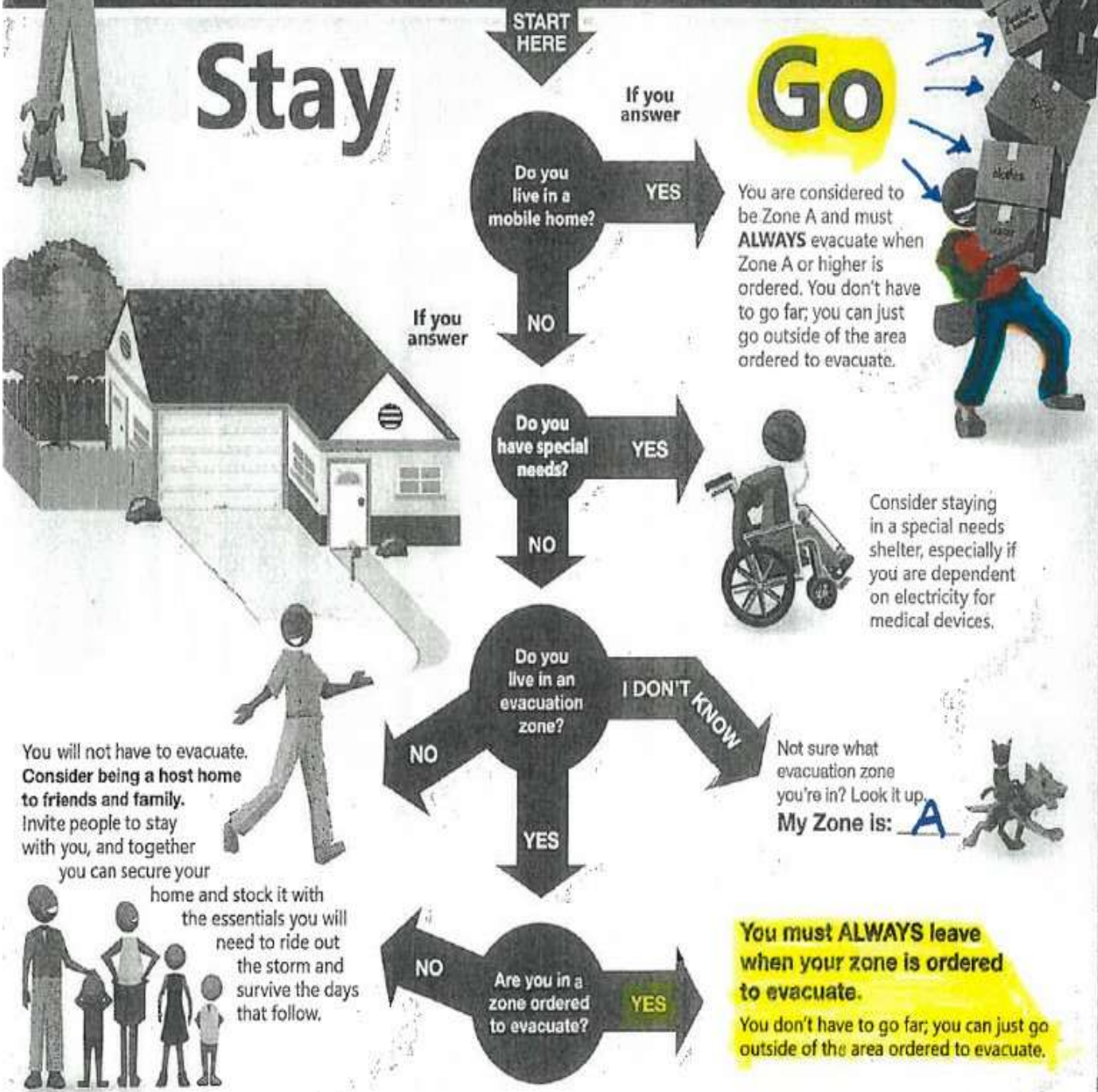
5 Plan for your pets. Most local shelters do not permit them.

For more Hurricane Safety Information, visit weather.gov/hurricanesafety

Check local government websites for information on evacuation routes and shelters before the storm. Be sure to fill up your gas tank(s) for both cars and generators ahead of time.

SHOULD I **STAY** or SHOULD I **GO**?

Use this tool to see if and when you would have to evacuate.



5 THINGS TO KNOW ABOUT HURRICANE HAZARD RISKS

1 Storm surge is water pushed onshore by the tropical system. It causes the most damage of any of the hurricane hazards.

2 Wind from a hurricane can top 200 mph and cause massive damage to buildings in its path.

3 Inland flooding caused by heavy rain damages homes and can wash out roadways well away from the coast.

4 Tornadoes are common as a hurricane moves ashore. They are not typically long-lived, but they can cause plenty of damage.

5 Rip currents and rough seas are common both before and after a hurricane, making swimming or surfing very dangerous.

For more Hurricane Safety Information, visit weather.gov/hurricanesafety

Even if you've experienced many tropical storms and hurricanes and think you know what to expect...no two storms are alike, so pay attention to local forecasts and plan accordingly.

5 THINGS TO KNOW ABOUT STRENGTHENING YOUR HOME

1 Keep trees around your home trimmed well before a storm to prevent damage from broken branches

2 Have the proper materials in advance to board up your windows to protect them from flying debris.

3 Bring loose outdoor items such as patio furniture inside. They can blow around and cause damage to homes.

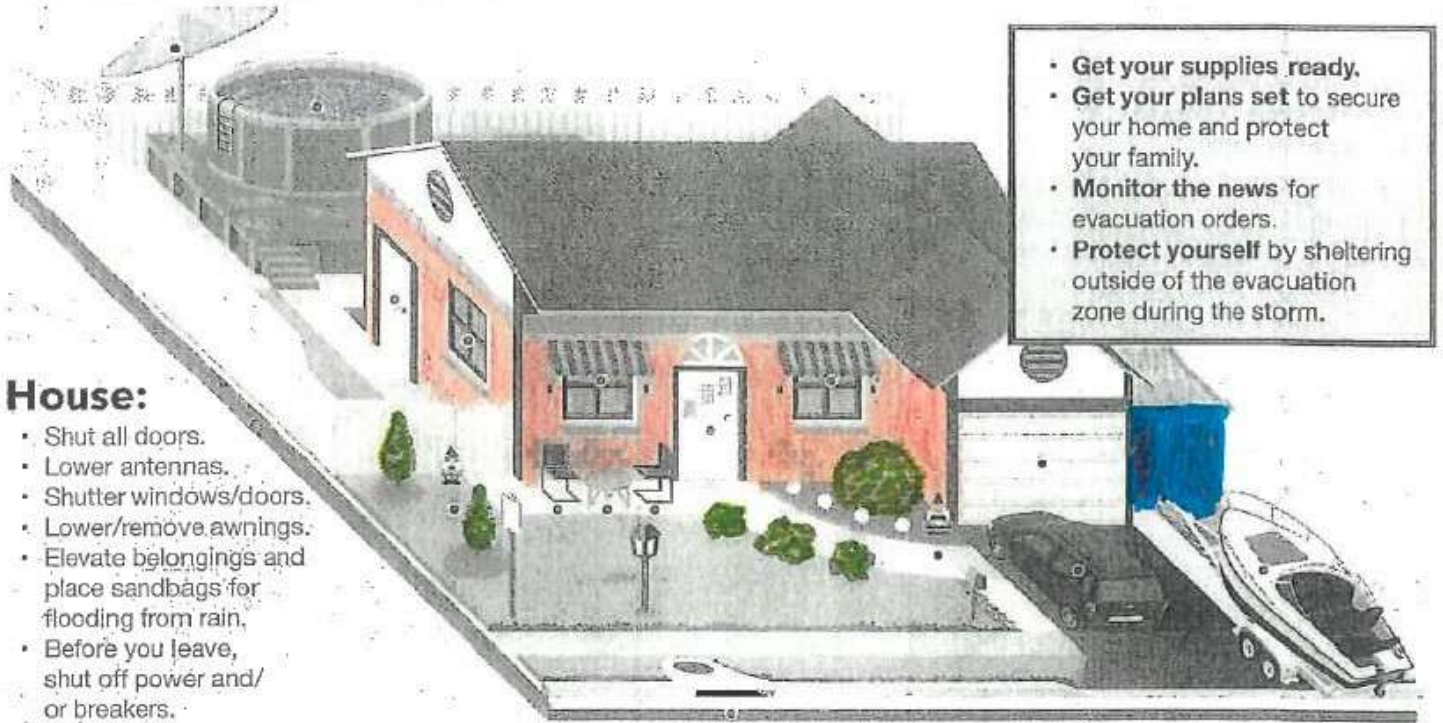
4 Secure all doors on your property. Remember that the garage door is usually the most vulnerable.

5 Move your car inside a garage or to another secure location.

For more Hurricane Safety Information, visit weather.gov/hurricanesafety

While none of us live in a single-family home at Boca Ciega, you should still take measures to secure your unit and remove loose items that can become projectiles during high winds and water. Be sure to have your hurricane shutters in place before you leave. When storm surge is predicted keeping your vehicle inside your garage may not be a viable option and you should seek higher ground to protect it.

SECURE YOUR HOME



- Get your supplies ready.
- Get your plans set to secure your home and protect your family.
- Monitor the news for evacuation orders.
- Protect yourself by sheltering outside of the evacuation zone during the storm.

House:

- Shut all doors.
- Lower antennas.
- Shutter windows/doors.
- Lower/remove awnings.
- Elevate belongings and place sandbags for flooding from rain.
- Before you leave, shut off power and/or breakers.

Garage:

- Reinforce the doors with a brace kit or use long steel or aluminum bars.
- Place flood barriers against the bottom of the door(s) to seal the gap.
- Lock the door.

Yard:

- Take all yard items inside.
- Clear balconies, steps and porches.
- Pick up/secure loose debris.
- Super-chlorinate your pool.
- Remove debris from your gutters and nearby storm drains if possible.

Vehicle:

- Fill gas tank and/or charge battery.
- Check oil and water.
- Place emergency supplies in the trunk.
- Move to a higher location if you expect flooding (especially for electric vehicles).
- Monitor traffic reports.

Boat:

- Store your boat on land and secure to trailer.
- Secure loose items.
- Disconnect electric, water, fuel, other dock connections.

The above graphic outlines suggestions and should be implemented, as applicable, to your home. Do not forget to turn off your main water valve. For boat owners, be sure to follow recommendations (see page 12) if keeping your boat on your lift or consider hiring a tie-down service to secure your boat properly.

5 THINGS TO KNOW ABOUT UPDATING YOUR INSURANCE

1 Check your insurance policies well ahead of the storm to see what is covered.

2 Make sure you have flood insurance. Flooding is the leading cause of damage from tropical systems.

3 Visit floodsmart.gov to learn about your flood risk and flood insurance options for your area.

4 Prepare your home and vehicles according to your specific insurance policies to ensure damages are covered.

5 Know where your insurance documents and contact information are located. Take them with you if you evacuate.

For more Hurricane Safety Information, visit weather.gov/hurricanesafety

It's important to know the difference between the Boca Sixteen's insurance coverage and what additional insurance you need to secure as a homeowner. Schedule a meeting with your insurance agent today while there is still time to make any necessary adjustments before a storm hits. **Take specific pictures and videos of interior contents, exterior courtyard and dock areas.**

Preparing your boat for hurricane season

Pinellas County is the second-largest boating community in Florida with nearly 54,000 registered boats. This presents a great risk during storms and hurricanes. In 2022, over 7,000 vessels were lost or damaged during Hurricane Ian. A little planning and preparation can help prevent damage to your boat and surrounding properties.



Thousands of boats were damaged or destroyed by Hurricane Ian. Many were washed ashore by the powerful storm surge in the Fort Myers area.

Before hurricane season

- **Keep boat insurance up to date** and ensure it covers hurricane impacts.
- **Store your records together in a safe place.** Have recent photos/videos of your boat and its contents; the Hull Identification Number (HIN#); and phone numbers for the Coast Guard, emergency contact at your marina, etc.
- **Make a plan** for what you will do with your boat if a storm comes.
- Check that your trailer and its tires, bearings and axle are in good condition.
- If you can't trailer your boat, **there are local marinas that can haul large boats out of the water and secure them during the storm.** Check size limits and make arrangements ahead of time.
- **Know what you're responsible for in your lease or storage rental agreement** with your marina or storage area.



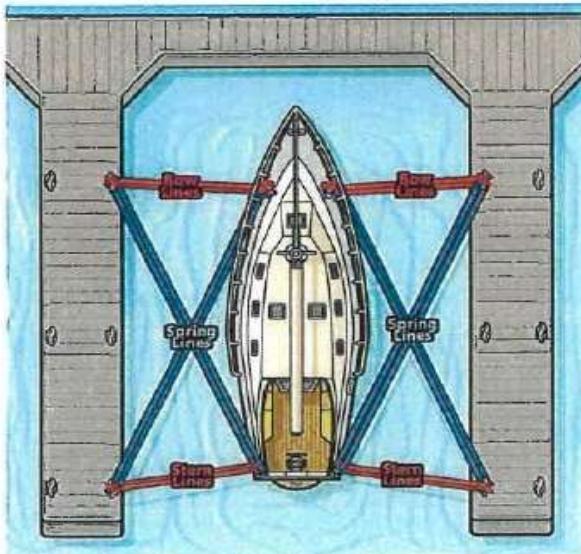
When we are in the path of a hurricane or tropical storm

Take your boat out of the water if possible.

- **Strap your boat securely to your trailer and move it outside of areas that could flood.** Avoid parking under trees. Once at a safe place, use wheel chocks or blocks to prevent rolling.
- **Secure your boat with heavy nylon lines** to fixed objects. If possible, find a location that will allow you to secure it from all four sides. It can be tied to screw anchors. Do not secure your boat to a tree.
- **If you plan for a local marina to haul your boat out of the water** and secure it, have it taken out long before the arrival of tropical storm-force winds.

If you are unable to take your boat out of the water:

- **Secure your boat in a protected and stable location.** Keep in mind that docks can be damaged in a major hurricane.
- **Double all lines. Run crossing spring lines,** each from one end of the boat to the opposite end on the dock. Attach lines high on pilings, keeping in mind that the longer the lines, the better, to allow for rising tides or storm surge. Make sure lines will not slip off pilings. Inspect pilings and choose those that seem strongest, tallest and properly installed. Be sure to use chafe protectors on the lines and fenders to protect the boat.



Remove all moveable equipment.

The above is an example illustration of a boat tie down, and you should always consult a professional for your specific boat, lift and dock configuration, and how best to secure your vessel.

- This includes canvas, sails, dinghies, radios, biminis and roller furling sails, etc.
- **Tie down everything you can't remove**, including tillers, wheels and booms.

Charge batteries and consider backup batteries.

- Turn off all devices using electricity except bilge pumps.

Drawbridge schedule changes

When a hurricane approaches, Pinellas County's **drawbridges will open less often** so that vehicles can evacuate over the bridge. **Eventually, bridges will be kept in the down position** and will not reopen until it's safe to do so.

The U.S. Coast Guard will issue a special marine advisory on Channel 16 before the drawbridge schedule changes.



If you live on your boat

Never consider riding out a storm on a boat. No matter how valuable your boat is to you, it's not worth your life. If possible, stay with friends or family outside of the area ordered to evacuate. Pinellas County has three types of public shelters: general population, special needs and pet friendly. Shelter locations will be announced through emergency notification systems, online and by local media outlets. Find more information at: disaster.pinellas.gov

PSTA runs free bus service to shelters during evacuations in Pinellas County. Learn more at: psta.net

Tune in to emergency information

- U.S. Coast Guard Special Marine Advisories: **Channel 16**
- U.S. Coast Guard: uscgboating.org
- Pinellas County emergency information: disaster.pinellas.gov
- Pinellas County Emergency Management: **(727) 464-3800**

LESSONS LEARNED from Hurricane Season 2024



Surge Warning: ~ Sustained Wind Speed: ● 39+ mph ● 58+ mph ● 74+ mph

HURRICANE DEBBY

- Strong tropical storm as it passed 77 miles offshore.
- Winds of 45 mph; gusts up to 60 mph.
- Rainfall 8-10 inches in areas of the county.
- 2 - 3 feet of storm surge.
- 49 businesses impacted.
- 330 homes damaged.

LESSON LEARNED

No matter the location or size of the storm, high winds, flooding, surge and rainfall can cause impacts.

HURRICANE HELENE

- Category 3 as it passed 105 miles offshore.
- Winds of over 80 mph.
- 5 - 7 feet of storm surge.
- Over 50% of Pinellas County lost power.
- Hundreds of water rescues in evacuation zones.
- 12 deaths.
- 689 businesses impacted.
- 33,566 homes damaged.

LESSON LEARNED

Evacuations need to be completed before storm impacts begin. Surge rises fast and people who should have evacuated put themselves in a life-threatening situation when they did not follow an evacuation order.

HURRICANE MILTON

- Category 3 as it made landfall 28 miles to the south of Pinellas County.
- Rainfall over 18 inches.
- Wind gusts of over 100 mph toppled many trees that brought down power lines and broke underground water, cable and fiber optic lines.
- Over 80% of Pinellas County lost power.
- 2 deaths.
- 430 businesses impacted.
- 12,832 homes damaged.

LESSON LEARNED

Hurricane impacts are not just coastal. Know your risk for surge, wind and flooding from heavy rains.

**Everyone needs to be prepared to survive a hurricane, no matter where they live.
Listen carefully to the forecast: No two storms are the same.**

Storms that move north, parallel to the coast, like hurricanes Debby and Helene, can place Pinellas on the "dirty" side of the storms, causing storm surge, rain and wind, even if it doesn't make landfall here.

Milton made landfall only 28 miles to the south. This short distance caused 10 feet of storm surge in Sarasota while Pinellas was spared.

Condo Sixteen East Board of Directors – Overview of Responsibilities

The Condominium officers present at the time a storm is approaching will vary and those who are present will extend assistance, if possible, to help unit owners/residents with their preparations.

Keep in mind, however, that those officers will be concerned with their own preparations as well. Their role is to protect property, they will not be available to put up hurricane shutters, secure boats and complete chores that are the owners' responsibility.

Your Condo Board officers will perform the following: (Note: this is not a complete list of responsibilities)

1. Verify that everyone has been notified that an emergency exists and attempt to ascertain everyone's plans if an evacuation is ordered.
2. Owners who are not leaving will be reminded of the risks and the possible consequences.
3. Verify that all units and items have been secured.
4. Verify that the units have been vacated and make notation of the destination of those who have departed.
5. Keep owner contact information as well as emergency contact information.
6. The Treasurer will take financial records, check books and other financial documents.
7. The Secretary will take copies of meeting minutes, "Condo Rules and Regulations" and any other information and pertinent documents.

When the emergency and/or evacuation ends, the available officers will meet to assess damage, and the appropriate insurance companies and contractors will be notified. Only a Condo Board Officer may file an HOA claim or authorize vendors to repair the common areas which includes the roof.

EMERGENCY ACCESS TAGS from the Boca Federation

In case of a state of emergency and/or evacuation, the Boca Federation will issue emergency access tags that will serve as the basis for entry into the community if the Envera virtual gate access system is not operational. There will be 2 tags issued per household, and these will be available to both residents and approved contractors pre and post storm.

It is suggested residents obtain these tags at the main office prior to evacuation, if possible. Once a mandatory evacuation order has been lifted, the tags will be required to re-enter the community in the event the Envera virtual gate access system is not functioning.

Under disaster conditions and the following recovery operations, access to Boca Ciega Point will be restricted to people with the emergency access tag or identification that they are a resident or property owner. This is to prevent sightseers and other unauthorized people from hindering emergency operations and to provide safety/security for our residents and their property.

If possible, contracted security personnel will be posted at the entrance. Should the virtual gate access system fail, these permits will be required to be displayed by hanging from a vehicle's rearview mirror.

Anyone without an emergency access pass, or an Envera gate decal, or identification showing they are a resident or property owner will be denied entry.

Condo Sixteen East Unit Owners – Overview of Responsibilities

Adhere to all weather warnings and be sure to clear your outside walls of ornamental hangings and your flower beds, yards and docks of furniture and other loose items to prevent damage to your home or our neighborhood. We recommend you follow the Boca 16 Hurricane Calendar Guideline that starts 5 days before any storm is predicted to hit the Tampa Bay area and/or even the surrounding counties just south and north of Pinellas. It is not a good decision to stay and not to evacuate when ordered. You will have no police, fire, or medical services to help you if you decide to 'Ride Out the Storm'.

Here's a good Top 10 to follow:

1. Review and follow the Boca16 Storm Prep Calendar Guideline found at the end of this document.
2. Have a plan. If evacuation is ordered, have a plan to go, i.e., shelter, hotel, a friend, or relatives located out of the evacuation zones.
3. Keep your vehicle fully fueled. If a storm surge is forecasted have a plan to move your car to a safe place.
4. Secure your home:
 - a. Bring patio and dock furniture, plants, and other items inside.
 - b. Remove ornamental hangings from patios and barrier walls.
 - c. Secure boats and lifts.
 - d. Close storm shutters and/or install window protection, if applicable.
 - e. There may be no one available to help you, so if you leave the area at any time during the Hurricane Season, be sure this is completed before leaving.
5. Prepare a "Go Bag" including important documents, prescriptions, and medications for two weeks, a change of clothing, eyeglasses, personal hygiene items, nonperishable food items and drinking water (minimum of 1 gal per person per day).
6. Secure all doors and openings with any flood prevention devices or hurricane shutters, if available.
7. Keep informed by radio, TV, phone, and local newspapers. Refer to published hurricane guides from Pinellas County.
8. If it becomes too late to evacuate, immediately notify your family and neighbors, if possible.
9. If you stay and lose electrical power, have flashlights, and a battery-operated radio available with plenty of fresh batteries. DO NOT USE CANDLES!
10. **When leaving, turn off water at main valve, unplug ALL electrical appliances and turn off (at breaker panel) all electricity *except to refrigerators and freezers.***

TIP: Freeze a cup of water prior to evacuation, and once frozen solid, place a quarter on top before leaving and place it back in the freezer. If you find the quarter is no longer on the top of the frozen water when you return... Discard Your Food.

DURING THE STORM

It is not recommended to stay in the Boca Ciega Point Community when an evacuation order is issued. All unit owners and residents are highly encouraged to follow all evacuation orders.

As a storm approaches and gains strength, there will come a point in time when it is no longer safe to evacuate, and everyone will need to shelter in place. Once wind reaches 40 to 50 mph conditions, responders will not be able to respond to emergencies. Here are a few things you can do to keep you and your family safe during and after a storm.

There's info provided in this packet for an app called “Local Relief” that you may find helpful to download.

At this point we hope you have gathered the necessary evacuation supplies such as water, food, medicine, utensils, flashlights, battery operated radio, extra batteries, clothing etc. to hold you through the storm and several days after. You have secured your boat, cleared your patio and yard of lightweight items, and secured all windows and doors. Now you must be prepared to react to certain dangers which come with heavy winds and rain.

If phone, cable, and cell service go down:

- ✓ Use a battery powered radio. Radio broadcasts are usually the last communication source to go down, and AM stations can broadcast longer than FM. Severe weather alerts are also transmitted through the NOAA Weather Alert Radio.
- ✓ Text messaging may work when other services do not. If your phone's digital clock works, then you can send and receive texts. Social media and mobile apps may be working as well.
- ✓ Keep your phone and other devices charged. Use your back-up battery charger and solar-battery chargers. Use a vehicle to charge your devices. And, if you have power and your neighbors do not, invite them to recharge their devices.

If there is a tornado:

- ✓ Get to the lowest level of your home and take shelter in an interior room without windows, like a closet or hallway.
- ✓ Lie on the floor under a table or other sturdy object if you cannot make it to a safe room.
- ✓ Curl up and cover your head with a mattress or another item.

If floodwater starts coming into your home:

- ✓ Floodwater and storm surge can move very quickly, and live power lines could be hidden in the water.
- ✓ Stay inside. Stand or sit off the floor, like on a bed or table.
- ✓ Do not open any doors.
- ✓ If the phones are working, call 911 and emergency management at 727-464-3800.
- ✓ If the water becomes too high, get on your roof if possible.

AFTER THE STORM

In the days following a hurricane, crews will be busy clearing roads, responding to emergency calls and assessing damage. Plan to rely on what you have stored for food, water and essentials.

- ✓ Regularly check your email and text for critical information regarding the Boca Ciega Community including when the community will reopen.
- ✓ Only call 911 in case of a police, medical or fire emergency. If you need information, call the County Information Center at 727-464-4333.
- ✓ Shelter in place. Do not attempt to travel. If you must go outside of your home, be mindful of dangers like downed power lines or contaminated floodwater.
- ✓ Assume that there is a boil water notice in place until you hear differently. Use stored water first.
- ✓ Take photos of your property for insurance. Take immediate steps to reduce flood damage.
- ✓ Check on your neighbors. Share food and take care of each other.
- ✓ **Set up a carbon monoxide detector before running a generator and be sure to review the generator safety section of this guide. Follow all manufacturer guidelines.**

If the power goes out:

- ✓ Unfrozen Meats and other perishable foods above 40 degrees will spoil after two hours.
- ✓ If power is out for more than six hours and if ice is available, you can move perishables to an ice-filled cooler.
- ✓ Place a thermometer in the cooler to ensure it remains below 40 degrees.
- ✓ Items in the freezer will typically keep for up to two days if you keep the freezer door shut.
- ✓ Once the storm passes, cook any unspoiled food outside and consider sharing with your neighbors. Beyond two days, you will need nonperishable food.

If the water supply is affected:

- ✓ Monitor the news for boil water advisories, which tell you if there is a possibility of contamination. Under a boil water advisory, you can disinfect the water using these methods. Boiling: Bring a pot of water to a rolling boil for one minute to ensure bacteria, viruses or parasites are gone.

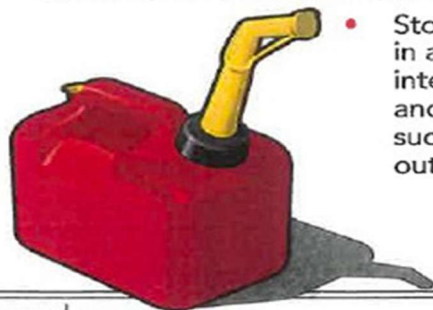
If there is a sewer outage:

- ✓ Do not flush your toilet. Flushing could cause sewage to back up into your home.
- ✓ You may consider using a portable toilet, like one used on a boat or camper, or create one by using one of the following methods:
 - Line a five-gallon bucket with a heavy-duty trash bag. Make sure the bucket has a tight lid. Use household bleach as a disinfectant.
 - Turn off your outside water supply. Empty the water from the toilet bowl and line the empty bowl with a heavy-duty trash bag.
 - When you DO learn that the sewer is operating again, dump the contents of your emergency toilet into your household toilet and flush being mindful of how much waste the system can tolerate without backing up. Thoroughly sanitize your emergency toilet before disposing. Bleach can be used as a disinfectant.
- ✓ DO NOT USE CAT litter as it cannot be flushed into the sewer system.



Downed utility lines, power company blackouts, heavy snow falls or summer storms can all lead to power outages. Portable generators are a temporary solution to power appliances. It's important to know that portable generators emit carbon monoxide (CO), a poisonous, deadly gas. Use these tips to avoid CO exposure:

- Use portable generators outdoors in well-ventilated areas at least 20 feet (7 metres) from all doors, windows, and vent openings. Measure the 20-foot (7 metre) distance from the generator to the building.
- Never use a generator in an attached garage, even with the door open.
- Place generators so that exhaust fumes can't enter the home through windows, doors or other openings in the building. The exhaust must be directed away from the building.
- Make sure to install carbon monoxide (CO) alarms in your home. Follow manufacturer's instructions for correct placement and mounting height.
- Turn off generators and let them cool down before refueling. Never refuel a generator while it is hot.



- Store fuel for the generator in a container that is intended for the purpose and is correctly labeled as such. Store the containers outside of living areas.

Just Remember...

When plugging in appliances, make sure they are plugged directly into the generator or a heavy duty outdoor-rated extension cord. The cords should be checked for cuts, tears and that the plug has all three prongs, especially a grounding pin.

If you must connect the generator to the house wiring to power appliances, have a qualified electrician install a properly rated transfer switch in accordance with the National Electrical Code® (NEC) and all applicable state and local electrical codes.

FACT

- ! Portable generator exhaust is toxic and deadly. Do not stand or sit downwind of generator exhaust. If you can smell exhaust, you are inhaling it.



NATIONAL FIRE PROTECTION ASSOCIATION
The leading information and knowledge resource on fire, electrical and related hazards

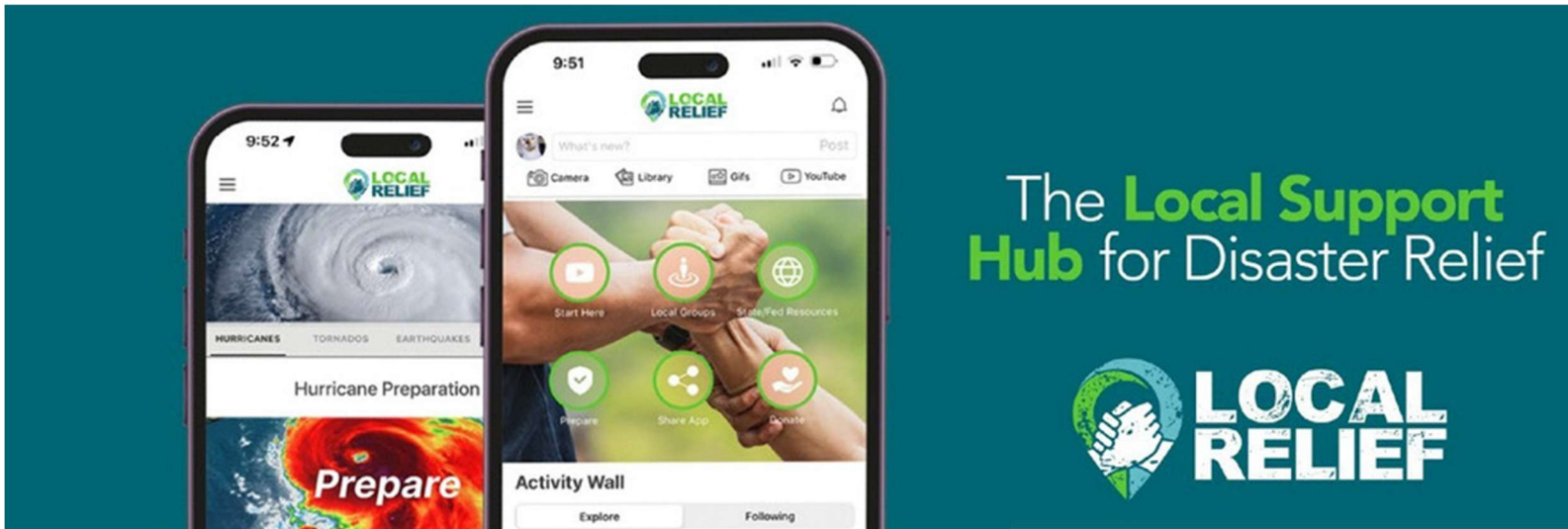
Your Logo

nfpa.org/education ©NFPA 2022

Note that there is reference to a transfer switch in the above graphic. If you are interested in installing one you must notify the Board first to be sure this is a permissible action.

HURRICANE/STORM ROLES AND RESPONSIBILITIES CHART FOR BOCA 16

TASK	CONDO ASSOCIATION				FEDERATION EXECUTIVE COMMUNITY				COMMUNITY SITE
	SIXTEEN EAST BOARD	OF DIRECTORS	UNIT OWNERS	PINELLAS CO	STATE OF FL	COMMITTEE	MANAGER	STAFF	
Declare State of Emergency					X				
Issue Evacuation Orders				X					
Follow evacuation orders	X		X			X	X	X	
Determine immediate threat to BCP Community						X			
Place storm recovery vendors on standby	X						X		
Official Community Spokesperson						X			
Securing common areas against physical harm								X	
Secure Federation Records							X		
Secure Association Records	X								
Communicate critical information to unit owners pre and post storm	X								
Secure loose items on property (courtyard, front and back areas)			X						
Secure boat on lift or bring boat to a safe place			X						
Hurricane shutter activation, if applicable			X						
Install flood mitigation, if applicable	X		X						
Secure personal cars from storm surge or other damage			X						
Assess community site damage post storm	X						X		
Coordinate and activate mitigation and dumpster vendors	X								
File HOA insurance claim, if applicable	X						X		
File personal property insurance claim, if applicable			X						
Removal of personal property from unit, if applicable			X						
Keep removed personal items in separate pile vs. construction debris			X						
Secure and activate mitigation vendor for Condo 16	X								
Secure and activate dumpsters and pickup for Condo 16	X								
Secure and activate white box vendor for Condo 16	X								
Follow instructions provided by Condo 16 Board	X		X						



LOCAL RELIEF EPK

HEATHER HACKETT, FOUNDER & EXECUTIVE DIRECTOR

Heather Hackett is the proud Founder and Executive Director of Local Relief, Inc., an innovative nonprofit organization dedicated to revolutionizing communication during times of disaster. Her passion for empowering communities stems from over 20 years of experience living in Florida, where she witnessed firsthand the destruction caused by Hurricane Ian in 2022. This experience motivated her to bring her 2017 vision of the Local Relief app to life as a trusted, reliable platform for disaster response.

LOCAL RELIEF OVERVIEW

Introducing Local Relief: Your Lifeline in Times of Crisis

Local Relief is a groundbreaking, desperately needed 501c3 nonprofit mobile app designed to bridge the communication gap between communities, organizations, and authorities during disasters. As a centralized hub for real-time updates and critical resources, Local Relief empowers users to stay informed, seek help, and support one another when it matters most.

The FREE Local Relief app connects:

- People impacted by disasters with neighbors wanting to help.
- Organizations and nonprofits that provide recovery assistance.
- Tips and information to keep you safe.



Share live updates • Find resources



HOW THE LOCAL RELIEF APP WORKS



LOCAL RELIEF IN ACTION

Imagine a storm is approaching. Here's how Local Relief keeps your community connected:

- 48 Hours Before: Neighbors share tips on preparing for the storm and which stores have essential supplies.
- 24 Hours Before: The app is buzzing with updates from trusted sources about evacuation routes, shelter locations, and last-minute safety tips.
- During the Storm: Local users post real-time road closures, safe zones, and requests for help, allowing neighbors to offer assistance and emergency responders to take quick action.
- After the Storm: Recovery efforts are coordinated via the app—whether it's debris removal, food distribution, or rebuilding initiatives. Local businesses, organizations, and volunteers stay connected to aid long-term recovery.

Social Media

- LinkedIn: <https://www.linkedin.com/company/localrelief>
- Instagram: @localreliefapp
- Twitter/X: @localrelief
- Facebook: @localreliefapp

BUILD AN EMERGENCY KIT

Assembling an emergency kit now can help you make sure you and your family have what you need in an emergency, such as a hurricane. To simplify the process, the Boca Ciega Hurricane Committee and Pinellas County Emergency Management recommend that you keep these items ready to go in case you need them at a moment's notice.

GENERAL

- Water: One gallon per person per day, for at least seven days.
- Non-perishable food: at least a one- week supply.
- Non-electric can opener.
- Paper plates, plastic cups and utensils.
- Medications.
- Extra bottled oxygen if needed. First aid supplies.
- Wipes, hand sanitizer, soap, toilet paper, feminine supplies, diapers.
- Eyeglasses and extra contact lenses. Flashlight or lantern.
- Battery-operated or hand-crank radio or NOAA Weather Radio
- Extra batteries.
- Cellphone with charger, extra battery backup, solar charger.
- Cash, preferably small bills. Books, cards, board games. Paper and pencil.
- Whistle.
- Rain Gear and Waterproof shoes.
- Insect repellent.
- Sunscreen.
- Full tank of gas in vehicle. Extra gas cans.
- Propane tanks for gas grill.
- Latex gloves/work gloves.

DOCUMENTS

- Driver's license, passport, other ID cards.
- Social Security card. Birth certificate.
- Marriage license, wills, death certificates, military records and other hard-to replace documents-not copies.
- Insurance policies for home, health, flood, auto, renters.
- Photos and videos of household before and after the storm.
- Titles to house, vehicles, boats.
- Account numbers for bank, credit cards, savings and investments.
- Proof of residency (utility bill)
- Important numbers and emergency contacts.
- Medical records from pharmacy, doctors, blood type, vaccinations.
- Household inventory.
- Emergency access permit for barrier island residents and businesses, if applicable.

BABIES

- Baby food.
- Formula.
- Sterilized bottles. Bottled water.
- Medications.
- Diapers.
- Wipes.
- Clothing.
- Thermometer.
- Pacifier.
- Blanket.
- Comfort items. Toys.
- Plastic trash bags for diapers.

SERVICE ANIMALS AND PETS

- Pet food and water for two weeks.
- Collar and leash.
- Carrier or crate.
- Newspaper or other lining.
- Identification/updated microchip.
- County license.
- Immunization records.
- Photo.
- Medications.
- Toys/blanket.
- Cat litter, pan, scoop.
- Plastic waste bags.
- Disinfectant.
- Paper towels.

HOST HOME OR HOTEL

- In addition to general supplies:
- Pillow and blankets.
- Air mattress, sleeping bag, floor mat.
- Change of clothing for several days.
- Other supplies needed by host home.

PUBLIC SHELTER – GENERAL

- In addition to general supplies:
- Blanket, pillow, cot, folding chair or twin-size air mattress.
- Change of clothing for several days.
- Special dietary items (sugar-free, low sodium, gluten-free, vegetarian/vegan, etc.) with can opener, if required.
Typically, only basic food/water is provided in public shelters.
- Wearable medical alert tag. Ear plugs.
- Eye mask/covering.

PUBLIC SHELTER – SPECIAL NEEDS

- In addition to general supplies:
- Wheelchair, walker, cane, other medical equipment.
- Oxygen concentrator. Nebulizer.
- Written instructions or orders regarding your care.
- Caretaker's supplies.

HOME

- In addition to general supplies (if you shelter in place or for when you return home):
- Ice and coolers.
- Tarps with rope or elastic cord, sheets of plastic.
- Wrench, utility knife, hammer, nails, duct tape.
- Dust masks.
- Portable toilet or large bucket with lid.
- Large garbage bags.
- Disinfectant or unscented bleach with medicine dropper.
- Matches or lighter.
- Outdoor grill and extra propane or charcoal.
- Battery operated fan.
- Extra gas for generators.

Boca 16 Storm Prep Calendar Guideline

🌀 5 DAYS BEFORE THE STORM (DAY 1)

Goal: Stay informed and initiate early preparations.

- Monitor local forecasts (NHC, Weather Channel, Pinellas County Emergency Management).
- Listen for evacuation zone information. Boca Ciega Point is in ZONE A.
- Notify the Board members, family/friends of your status and location.
- Start refilling medications and medical supplies (14-day supply).
- Make arrangements for pets.
- Check and update emergency contacts.
- Review Emergency Kit Checklist.
- Review the Roles and Responsibilities Chart for Boca 16.

🌀 4 DAYS BEFORE THE STORM (DAY 2)

Goal: Prepare supplies and secure outdoor areas.

- Stock up on:
 - Water (1 gallon/person/day for 7 days)
 - Non-perishable food
 - Batteries, flashlight, radio (battery or crank)
 - Hygiene and medical items
- Bring in outdoor furniture, decorations, potted plants.
- Charge all electronics and backup batteries.
- Notify BCP staff of any special needs or assistance required.
- Obtain your emergency access tags from the Federation office. 2 per household.

🌀 3 DAYS BEFORE THE STORM (DAY 3)

Goal: Prepare for possible evacuation or shelter-in-place.

- Finalize evacuation plan:
 - Destination (friend/family/shelter).
 - Transportation.
- Pack "Go Bag":
 - ID, insurance docs, prescriptions, first-aid kit.
 - Flashlight, change of clothes, water, snacks.
 - Phone charger, cash, eyeglasses.
- Register for Special Needs Shelter, if applicable.
- If traveling during hurricane season, secure your home as if evacuating.

🌀 2 DAYS BEFORE THE STORM (DAY 4)

Goal: Secure your home and confirm plans.

- Install shutters or window protection.
- Secure boats and lifts.
- Freeze a cup of water with a quarter on top (food safety test).
- Fill tubs, sinks, containers with water.

🌀 1 DAY BEFORE THE STORM (DAY 5)

Goal: Final checks before sheltering or evacuating.

- Move “Go Bag” to front door or car.
- Check on neighbors—especially those with special needs.
- Secure all doors and windows.
- Turn off water at the main valve.
- Unplug appliances, turn off electricity at the breaker **except fridge/freezer**.
- Stay informed via radio or alerts.
- Follow official evacuation instructions immediately.
- Avoid travel once winds exceed 40 mph.
- Notify the Board of your evacuation plans.

Questions? Contact your Condo Board or visit:

<https://www.pinellascounty.org/emergency/>

Should you discover any typos, incorrect information or have any suggestions regarding this document please contact a Board member.